

**General Description**

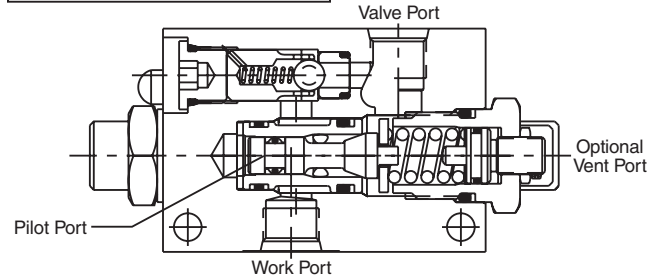
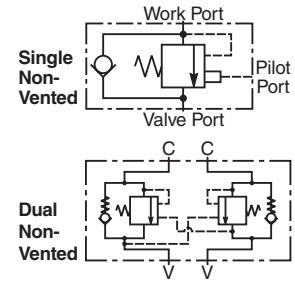
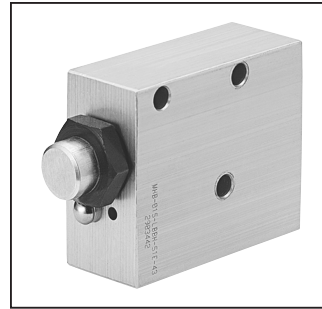
Body Style Counterbalance Valve.  
 For additional information see Technical Tips on pages LM1-LM4.

**Features**

- Conical Poppet design provides longer metering stroke for stable operation
- Hardened seat provides reliable load holding
- External vent option available for high back pressure applications
- Tamper resistant cap for added safety and security
- Various pilot ratios available for application flexibility

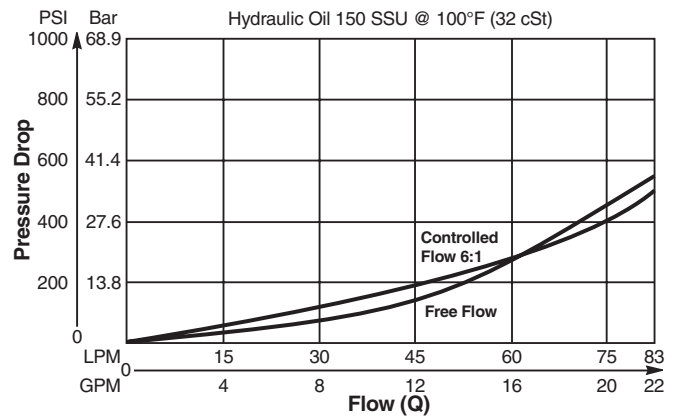
**Specifications**

Rated Flow	56 LPM (15 GPM)
Maximum Inlet Pressure	210 Bar (3000 PSI)
Leakage at 150 SSU (32 cSt)	5 drops/min. (0.33 cc/min) @ 80% of thermal crack pressure
Valve Material	All parts steel. All operating parts hardened steel.
Body Material	Aluminium
Operating Temp. Range/Seals	-26°C to +204°C (Fluorocarbon) (-15°F to +400°F)
Fluid Compatibility/Viscosity	Mineral-based or synthetic with lubricating properties at viscosities of 45 to 2000 SSU (6 to 420 cSt)
Filtration	ISO-4406 18/16/13, SAE Class 4
Approx. Weight	<b>Single</b> 0.68 kg (1.5 lbs.) <b>Double</b> 1.36 kg (3.0 lbs.)



**Performance Curve**

**Flow vs. Pressure Drop (Through cartridge only)**



**Ordering Information**

<b>MHB</b>	—	<b>015</b>	—	<b>L</b>					<b>51</b>	
Counterbalance Parts In Body		Nominal Flow Rating		Vent Setting	Pilot Ratio	Body Style	Holding Pressure	Porting	Pilot Port	

**Highlighted** represents preferred options that offer the shortest lead times. Other options may be available, but at extended lead times.

Code	Nominal Flow Rating
015	46.3 LPM (15 GPM)

Code	Body Style
A	Single Inline
B	Single Gasket
D	Double Inline
E	Double Gasket

Code	Holding Pressure
E	34.5 to 103.4 Bar (500 to 1500 PSI)
H	105 to 210 Bar (1500 to 3000 PSI)

Code	Vent Setting
L	Non-vented

Code	Porting
51	SAE-6

Code	Pilot Ratio
B	3 : 1
E	6 : 1

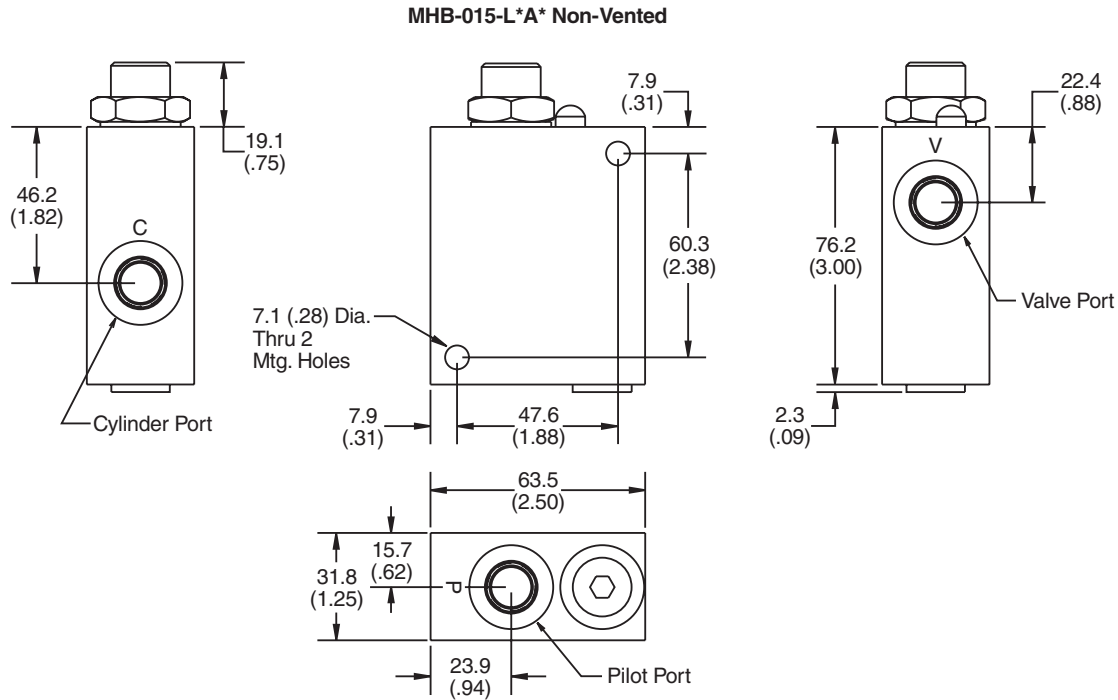
Seal Kit No.	
<b>Single</b>	711708
<b>Double</b>	711709

Code	Pilot Port
N	Internal Pilot (Dual valve only)
E	SAE-6

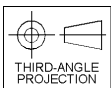
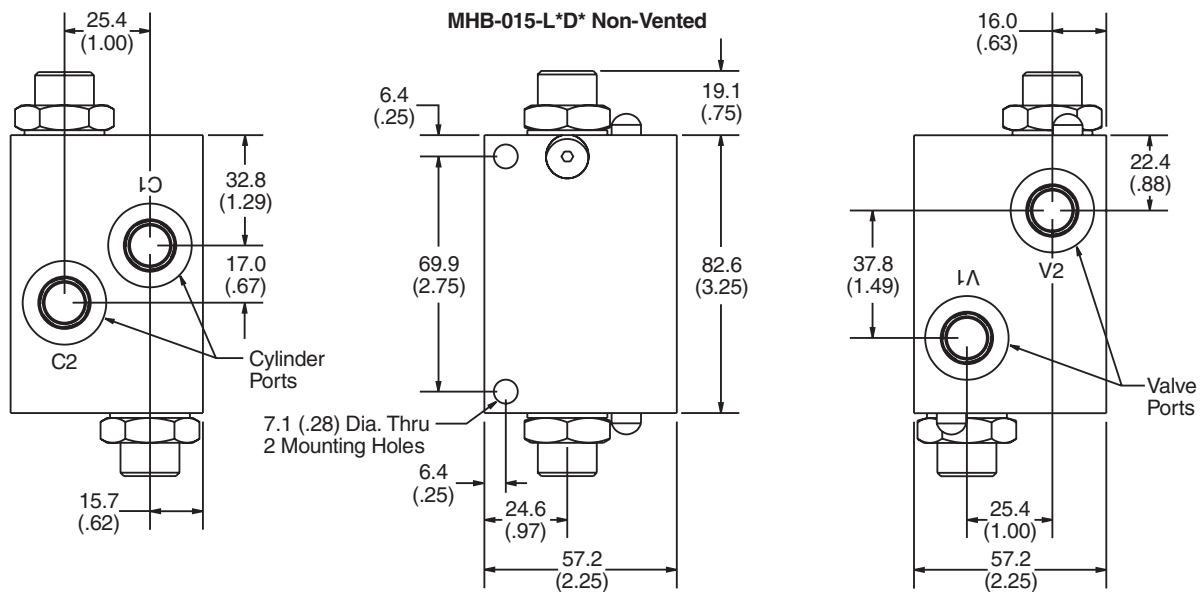


\*Inch equivalents for millimeter dimensions are shown in (\*\*)

**Series MHB-015-L\*A\*** Single Counterbalance, Non-Vented, In-line Mount



**Series MHB-015-L\*D\*** Dual Counterbalance, Non-Vented, In-line Mount

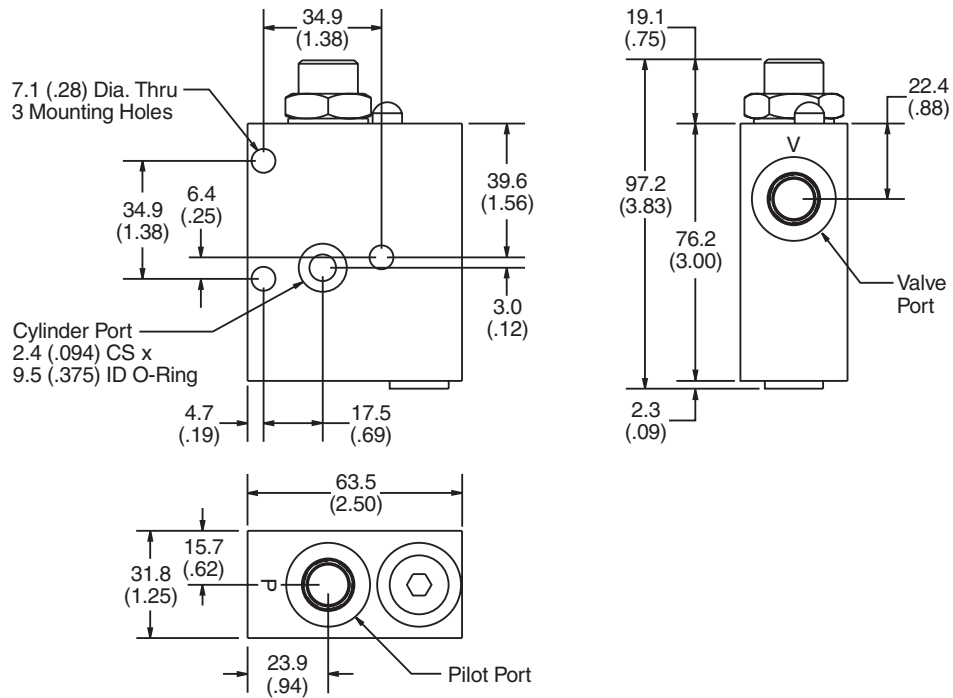


CV
Check Valves
SH
Shuttle Valves
LM
Load/Motor Controls
FC
Flow Controls
PC
Pressure Controls
LE
Logic Elements
DC
Directional Controls
MV
Manual Valves
SV
Solenoid Valves
PV
Proportional Valves
CE
Coils & Electronics
CB
Cartridge Bodies
BC
Bodies & Cavities
TD
Technical Data

\*Inch equivalents for millimeter dimensions are shown in (\*\*)

**Series MHB-015-L\*B\*** Single Counterbalance, Non-Vented, Gasket Mount

**MHB-015-L\*B\* Non-Vented**



**Series MHB-015-L\*E\*** Dual Counterbalance, Non-Vented, Gasket Mount

**MHB-015-L\*E\* Non-Vented**

